

# QUALITY PRODUCTS

COOPER FLUID SYSTEMS OFFERS AN EXTENSIVE RANGE OF QUALITY HYDRAULIC, LUBRICATION AND FLUID HANDLING PRODUCTS AND SYSTEMS.

## CFS Hydraulic & Pneumatic Rewind Hose Reels

The solid steel construction, minimal moving parts and high quality powder coated finish combine to establish the "Cooper Reel" as the market leader in heavy duty hose reels.

### Features and Benefits Include:

- Safe to operate and maintain.
- No power springs.
- Direct drive - no chain.
- Less moving parts.
- No pawl.
- Stainless Steel hose guide.
- Greater hose carrying capacity.
- High flow with low pressure drop.
- Optional Brake Assembly (pneumatic only).

### Special Reels:

- Customer specified colour paint.
- Custom designed hose guides.
- Stainless Steel hub and swivel.



Hose Reel Stand



PB693  
Air Brake Assembly



HR-05-026  
Swivel Arm



688808  
Manifold

**ENERPAC**

**LINCOLN**



**SMC**



**macnaught**

**EAT•N**

**Aeroquip**

**AUSTRALIA'S HYDRALUIC & LUBRICATION SPECIALISTS**

[www.cooperfluidsystems.com.au](http://www.cooperfluidsystems.com.au)

**PERTH  
MACKAY**

**KALGOORLIE  
TOWNSVILLE**

**ADELAIDE  
NEWMAN**

**BRISBANE  
HUNTER VALLEY**

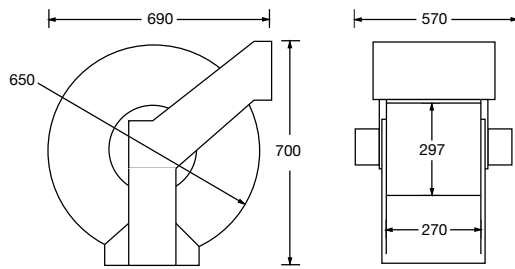
**GLADSTONE  
MT ISA**

**1300 026 673**

A Division of Coventry Group Ltd ABN 37 008 670 102

# HOSE REEL SPECIFICATIONS

## Hydraulic High Volume Rewind Hose Reel



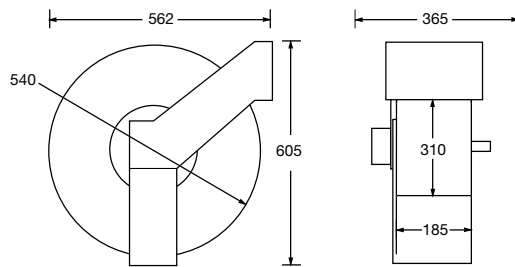
### HRD392

Applications: Diesel, Oil, Grease, Air

#### Specifications:

Max. Rewind Hyd. Pressure	1000psi, 6.95Mpa
Max. Dispensing Pressure	300psi, 2.07Mpa
Inlet Port	1-1/2" NPT (F)
Outlet Port	1-1/2" NPT (F)
Reel Capacity	20m x 50mm OD Hose (based on control rewind feed)
Bearing Mounted	Low Friction
Hose Guide	Stainless Steel
Viton seals	
Three (3) moving parts	

## Hydraulic Rewind Hose Reels



### HRG992 Applications: Grease

### HRO991-3/4" , HRO991-1" , HRO991SS\*

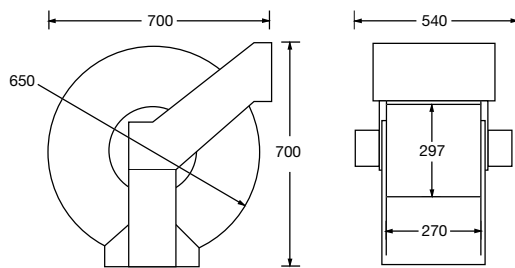
### HRW991SS\*\* Applications: Oil, Water, Air

\* Stainless Steel Hub # 1" Water Hose Reel

#### Specifications:

Max. Rewind Hyd. Pressure	1000psi, 6.9Mpa
Max. Dispensing Pressure (fluids)	3000psi, 20.69Mpa
Max. Dispensing Pressure (grease)	5000psi, 34.48Mpa
Inlet Port	Oil - 3/4" / 1" (NPT (F)) Grease - 1/2" NPT (M)
Outlet Port	Oil - 3/4" / 1" (NPT (F)) Grease - 3/4" NPT (F)
Reel Capacity	35m x 28mm OD Hose (based on control rewind feed)
Bearing Mounted	Low Friction
Hose Guide	Stainless Steel

## Pneumatic High Volume Rewind Hose Reel



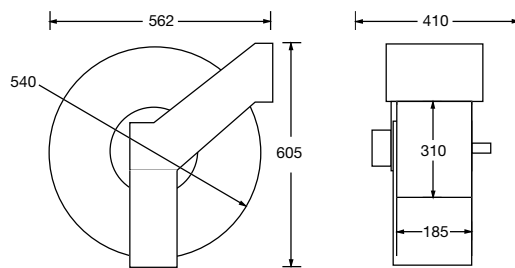
### PRD493

Applications: Diesel, Oil, Grease, Air

#### Specifications:

Max. Rewind Air Pressure	100psi, 0.69Mpa
Max. Dispensing Pressure	300psi, 2.07Mpa
Inlet Port	1-1/2" NPT (F)
Outlet Port	1-1/2" NPT (F)
Reel Capacity	20m x 50mm OD Hose (based on control rewind feed)
Bearing Mounted	Low Friction
Hose Guide	Stainless Steel
Viton seals	
Three (3) moving parts	

## Pneumatic Rewind Hose Reels



### PRG393 Applications: Grease

### PRO593 , PRO446SS\*

Applications: Oil, Water, Air

\* Stainless Steel Hub

#### Specifications:

Max. Rewind Air Pressure	100psi, 0.69Mpa
Max. Dispensing Pressure (fluids)	3000psi, 20.69Mpa
Max. Dispensing Pressure (grease)	5000psi, 34.48Mpa
Inlet Port	Oil - 3/4" (NPT (F)) Grease - 1/2" NPT (M)
Outlet Port	Oil - 3/4" (NPT (F)) Grease - 3/4" NPT (F)
Reel Capacity	35m x 28mm OD Hose (based on control rewind feed)
Bearing Mounted	Low Friction
Hose Guide	Stainless Steel

#### NOTE:

Air supply must be filtered and lubricated for air motor to function correctly.  
Installation considered to prevent ingress of water through air motor exhaust port.